

Dozens of Affordable Plan & Building Ideas

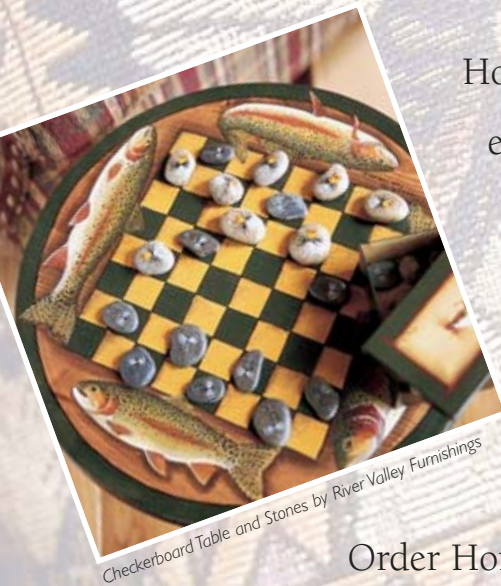
LOG HOME DESIGN IDEAS

Tour our
Appalachian
Mail Order
log home

the
NEW kitchen
culture

Coming Together in Tennessee

How do you build, landscape and furnish a log home without ever leaving home (or the office, in this case)? First and foremost, you've got to have a good team of suppliers and contractors. And even if they are spread out across the country, it can be done. The key to making it happen — mail order. With the cooperation of a dozen national furniture and furnishings suppliers, the Appalachian Mail Order Home was born in the hills of northeastern Tennessee.



By Teresa Hilgenberg

Photos © 1999 Brad Simmons

Produced by Cindy Martin

LEFT: Perched on a wooded, lakeside lot near Tazewell, Tennessee, the Appalachian Mail Order Home is one of the first homes to be built in the Lone Mountain Shores development. A main level deck and bottom level covered deck optimize enjoyment of the property's natural features.

PROJECT SPONSORS

Acucraft, Inc.
Aiphone
Appalachian Log Structures, Inc.
Beam Industries
Caradco Windows
Carriage Carpets
Hardman's Lumber
Kemper Company, Inc.
Progress Lighting
Sika Corp.
Unico System
Union Church Millworks
Wilsonart International, Inc.
Wirsbo/Home Technology Group



Deck Furniture by Vermont Outdoor Furniture



Chair by Southwest Style



Candle and Holder by River Valley Furnishings

ABOVE: No one could resist sittin' a spell in this quiet setting. The home's design and location lend it to year-round use.

From a raw piece of land to a classically-chiseled log home, the Appalachian Mail Order Home was almost eight months in the making. To see the finished home, read on ...



Every detail in the great room — from the bear paw bookends in the sportsmen's cabinet to the birchbark basket on the hearth — was coordinated by River Valley Furnishings. With its northwoods cabin décor, the great room has a rustic, natural feel. The theme is carried through in the glass-top coffee and end tables, which feature exquisitely-detailed riverbed carvings (INSET, FACING PAGE).

The fireplace is the new Z-Max zero-clearance system by Acucraft; Acucraft also worked with St. Croix Stone to provide the prairie blend stone that comprises the fireplace surround.

Capiz Shell Lanterns by Gardener's Supply Co. • All other furniture and accents by River Valley Furnishings







ABOVE: One of the home's most attractive design elements is the towering wall of glass that opens the great room onto the rear deck, and the trees and lake beyond.

RIGHT: Wrought iron table legs and chairs with a clean, classic design give the dining area a formal feel that contrasts with the great room's more rustic décor.



Floor design by Union Church Millworks



Dinnerware by Kitchen & Home
Flatware by River Valley Furnishings

The Appalachian Mail Order home is in Tennessee, not far from the Kentucky border. The log supplier has offices in West Virginia and South Carolina. *Log Home Design Ideas*, whose staff coordinated the decorating on the project, calls Wisconsin home. Throw in a landscaper from Virginia, a fireplace company from Minnesota and an endless stream of suppliers from points north, south, east and west, and pulling it all together could have been a logistical nightmare. A strong supporting cast made it all possible.

HOW IT ALL STARTED

Appalachian Log Structures, Inc. (ALSI) was interested in building a spec home. When Rob Miles, an ALSI builder and dealer based in Cumberland Gap, Tennessee, told the home office about the new Lone Mountain Shores development, a lasting relationship was born.

Located about 10 minutes from Tazewell in northeastern Tennessee, Lone Mountain Shores is a beautiful development in the rising and rolling

Table & Chairs by The Bombay Co. • Rods & Tab-Top Curtains by Country Curtains
Place Settings (flatware, napkins, napkin rings) by River Valley Furnishings • Torchiere by Meyda Tiffany
Leaf Prints by Sturbridge Yankee Workshop • Courting Candles by Berea College Student Crafts





Storage Cart, Non-Skid Bowls, Dish Towel Set, Paper Towel Holder, Spatulas by Kitchen & Home • Rolling Pin, Cooking Oils, Flour, Canisters, Blue Ceramic Basket by King Arthur Flour
Tab-Top Valance by Country Curtains • Carved Duck by River Valley Furnishings • Apple Peeler by L.L. Bean

foothills near Norris Lake. The setting is idyllic, a log home the perfect fit.

At the same time, *Log Home Design Ideas* (LHDI) was looking for a log home company that would join the magazine to create a project home. Public relations expert Jerry Rouleau

brought ALSI and LHDI together, and the rest, as they say, is history.

OFF AND RUNNING

Construction of the home began in spring, 1999. Miles and his crew went

to work crafting the 2,100 square foot home, a slight variation of ALSI's Fair Oaks plan.

A testament to the simple, nature-inspired crafting of homes from wood in its most natural state, the Fair Oaks offers an open concept with flowing

Emily's FOUNDATION

A Legacy of Love

LEFT: The kitchen continues the home's open design with few barriers and a peninsula open to the dining area. Cabinets by Diamond, light fixtures by Progress Lighting and countertops by Wilsonart International mean this work center is ready to do its job.

BELOW: A buffet server is both attractive and functional, and provides a visual partition between the dining area and great room.

Buffet Server, Assorted Candles by The Bombay Co. • Mica Mini-Lamps by Meyda Tiffany



An integral part of the Appalachian Mail Order Home team, David and Judy NuHaven of Emily's Foundation coordinated all of the local publicity for the open house events. From posting directional signs to the home to arranging interviews with area press, the NuHavens were almost singularly responsible for letting people know about the project.

Emily's Foundation, a non-profit organization that provides families the tools they need to stay together through the healing process after losing a child, is near and dear to the hearts of the NuHavens. When they lost their daughter, Emily, to a car accident in 1995, David and Judy founded the organization in hopes of aiding families that had experienced a similar loss. The group's goal is to preserve these bereaving families by providing counseling, seminars, retreats and other services.

In addition to publicizing the open house events for the mail order home, the NuHavens made contacts with church and community groups in the Tazewell area. Members of these groups assisted the NuHavens in staffing the home on both of the open house weekends. All of the proceeds from the preview and open house events were donated to Emily's Foundation.



Bedding Ensemble, Window Treatments (sheets), Bed, Coat Rack, Table and Floor lamps, Mini Wreath Trio by L.L. Bean • Rocker, Peg Rack, End and Sofa Tables, Basket Vase, Floral Prints by Sturbridge Yankee Workshop • Panama Garden Hat by Gardener's Supply Co. • Candles by The Bombay Co.

living spaces. It would be a beautiful log home in a beautiful setting. To complete the picture, the home's inside needed to be decked out in fitting fashion.

DESIGN AND DÉCOR

As construction of the home continued in Tazewell, LHDI staff was at work in Wisconsin, selecting everything from furniture to candles to outfit the home.

It may sound like fun, but one never realizes just what goes into making an empty house a home until you have to sit down and do it. Mail order, from catalogs and the Internet, made the daunting task easy and enjoyable.

A dozen national companies offered their product lines for the home's décor. Choosing beds and bedding, tables, chairs and even place settings, the house was decorated from top to bottom, bedrooms to great room with furniture and accents found in catalogs and on Web sites.

WHEN ALL IS SAID & DONE

The end result of everyone's hard work: a traditional log home with a northwoods flair and classic details.

The great room is open yet comfortable, masculine in theme but not too much so. The kitchen is colorful, the dining room simple.

Each of the home's three bedrooms was decorated with a very different feel. The master bedroom is the home's most feminine space, decorated in shades of burgundy and yellow to show how a woman's space can be carved out of a very woody, masculine shell. One of the home's guest rooms features a hickory log bed and furniture accented with pinecone and green furnishings. The other, decorated as if a child's room, is whimsical and fun.

And at the end of it all, with open house tours long done and new owners ready to move in, the house is a place to call home. 🏠



Dresser and Chair by Southwest Style
Lithophane Lamp by Meyda Tiffany
Candles by The Bombay Co.
Wastebasket by Berea College Student Crafts

LEFT: The master bedroom was purposely decorated in a feminine style with a cabin feel. This was achieved through the use of a plaid coverlet in shades of burgundy and yellow. The room is balanced by the harder lines of a forged-iron bed and accent pieces.

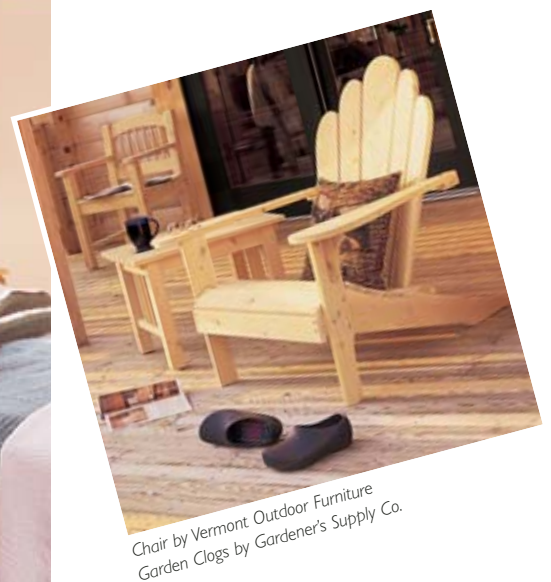
RIGHT: The first of two second-floor bedrooms was decorated for a child.

BELOW: A hickory bed brings a twist to the popular log furniture found in many log homes. Soft shades of green and pinecone accents create a warm environment.



ABOVE: Mini Rocker by Southwest Style
Laundry Bagger, Blanket by L.L. Bean
Boat Shelves, Bench by Sturbridge Yankee Workshop
Cabin Check Valance by Country Curtains
Chinese Checkers by Berea College Student Crafts

LEFT: Bed, Nightstands, Coat Rack by Southwest Style
Sheet Set, Blanket by L.L. Bean
Pinecone Prints by Sturbridge Yankee Workshop
Lamps by Country Curtains



Chair by Vermont Outdoor Furniture
Garden Clogs by Gardener's Supply Co.

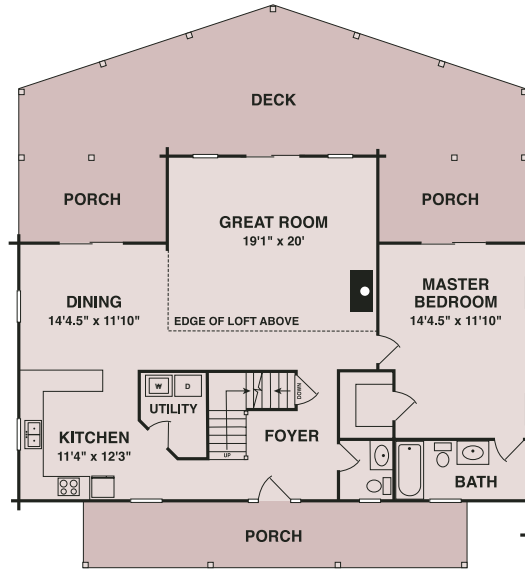


Describing Lone Mountain Shores, location of the Appalachian Mail Order Home, as a "development" may be misleading. That word conjures pictures of home after home in a subdivision-like setting. Nothing could be further from the truth.

Straddling Norris Lake, Lone Mountain Shores is 10 miles from Tazewell. Just a short drive from the Kentucky and Virginia borders, the area boasts an almost perfect climate: cool in the summer and mild in the winter.

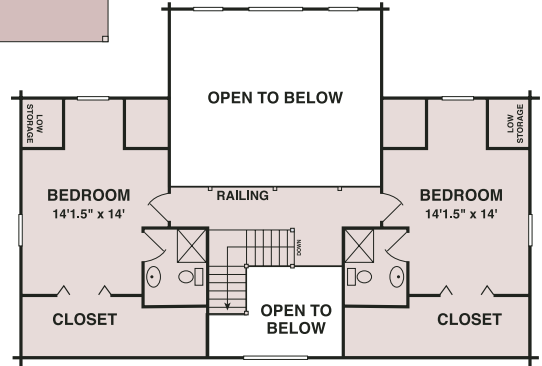
The drive through the development to the home, a winding course that takes you up, down and around the foothill setting, is at least 20 minutes in good conditions. And it may take longer if you take the time to enjoy the area's beautiful wooded setting.

The lots being sold in the Lone Mountain development include an average of 250 feet of waterfront access, which makes them ideal for anyone who enjoys fishing, swimming or other similar pursuits. The beautiful scenery afforded by all of the parcels, waterfront or lake view, is breathtaking, featuring nature at its best. Best of all, the development offers privacy for those who want to "get away from it all."



APPALACHIAN MAIL ORDER HOME FLOOR PLAN

FIRST FLOOR



SECOND FLOOR



Wreath by L.L. Bean

Chairs by Southwest Style

RESOURCES

ACUCRAFT, INC.
612-263-3156
www.acucraft.com

AIPHONE
800-692-0200
www.aiphone.com

APPALACHIAN HEATING & AIR
423-586-0047

APPALACHIAN LOG
STRUCTURES, INC.
800-458-9990 • Ripley, WV
800-390-2574 • Gaffney, SC
www.appllog.com

AQUAGLASS
901-632-0911
www.aquaglass.com

BEAM INDUSTRIES
515-832-4620
www.beamvac.com

BENCHMARK STEEL DOOR
& FRAME SYSTEMS
540-898-5700
www.benchmarkdoors.com

BEREA COLLEGE
STUDENT CRAFTS
800-347-3892
www.berea.edu

THE BOMBAY CO.
800-829-7789
www.bombayco.com

BRUMMITT ELECTRICAL
423-869-4614

CARADCO WINDOWS
800-238-1866
www.caradco.com

CARRIAGE CARPETS
800-241-4211

CLOPAY
Contact HWI Supply
www.clopay.com

COUNTRY CURTAINS
800-876-6123
www.countrycurtains.com

CUMBERLAND GAP
LOG HOMES
423-869-2525

DAVIS BROTHERS
NURSERY, INC.
540-445-4230

DAVIS PLUMBING & HEATING
423-861-3339

DELTA FAUCET COMPANY
800-345-DELTA (3358)
www.deltafaucet.com

DIAMOND CABINETS
Contact Hardman's Lumber
www.diamond2.com

ELLIOTT STEAM CLEANING
423-626-7560

EMILY'S FOUNDATION
315-484-2175
http://emilysfoundation.org

GARDENER'S SUPPLY CO.
800-863-1700
www.gardeners.com

GLIDDEN
216-344-8482
www.icipaintstores.com

HARDMAN'S LUMBER
800-927-4701
www.hardmans.com

HWI SUPPLY
219-749-8531
www.doitbest.com

IMPERIAL MARBLE
Contact HWI Supply

J. ROULEAU & ASSOCIATES
603-643-5033

KEMPER INDUSTRIES
970-241-6993

KING ARTHUR FLOUR
800-827-6836
www.kingarthurfLOUR.com

KITCHEN & HOME
800-414-5544
www.kitchenandhome.com

LENNOX INDUSTRIES, INC.
800-9-LENNOX (53-6669)
www.DaveLennox.com

LL BEAN
800-221-4221
www.llbean.com

LONE MOUNTAIN SHORES
800-704-354

MANNINGTON
Contact HWI Supply

MANSFIELD
Contact HWI Supply

MEYDA TIFFANY
Available at Fine Home
Furnishing Retailers

PROGRESS LIGHTING
864-599-6000
www.progresslighting.com

RIVER VALLEY FURNISHINGS
423-570-0044

S&W WHOLESALE
800-688-2898

ST. CROIX STONE
651-464-8770
www.stcroixstone.com

SIKA
Contact Appalachian
Log Structures
www.sika.com

SOUTHWEST STYLE
800-267-0224
www.swstyle.com

STURBRIDGE
YANKEE WORKSHOP
800-231-8060
st3.yahoo.com/sturbridgyankee/
index.htm

T&O EXCAVATING
423-869-5071

TRIANGLE PACIFIC CORP.
Contact HWI Supply
www.ixlcabinets.com

UNICO SYSTEMS —
WIRSBO/HOME TECHNOLOGY
GROUP
612-891-2000
www.hometechnologygroup.com

UNION CHURCH
MILLWORKS, INC.
540-862-0767
www.cfw.com/~millwork/index.htm

VERMONT OUTDOOR
FURNITURE
800-588-8834
www.vermontoutdoorfurnitur.com

WILSONART INTERNATIONAL
800-433-3222
www.wilsonart.com

Capiz Shell Lanterns by Gardner's Supply Co. • All other furniture and accents by River Valley Furnishings



Reprinted with permission from Log Home Design Ideas March 2000. ©2000 Home Buyer Publications, LLC, Chantilly, Virginia, 800-826-3893.